

*CV-21 FTR*

INSTALLATION  
INSTRUCTIONS

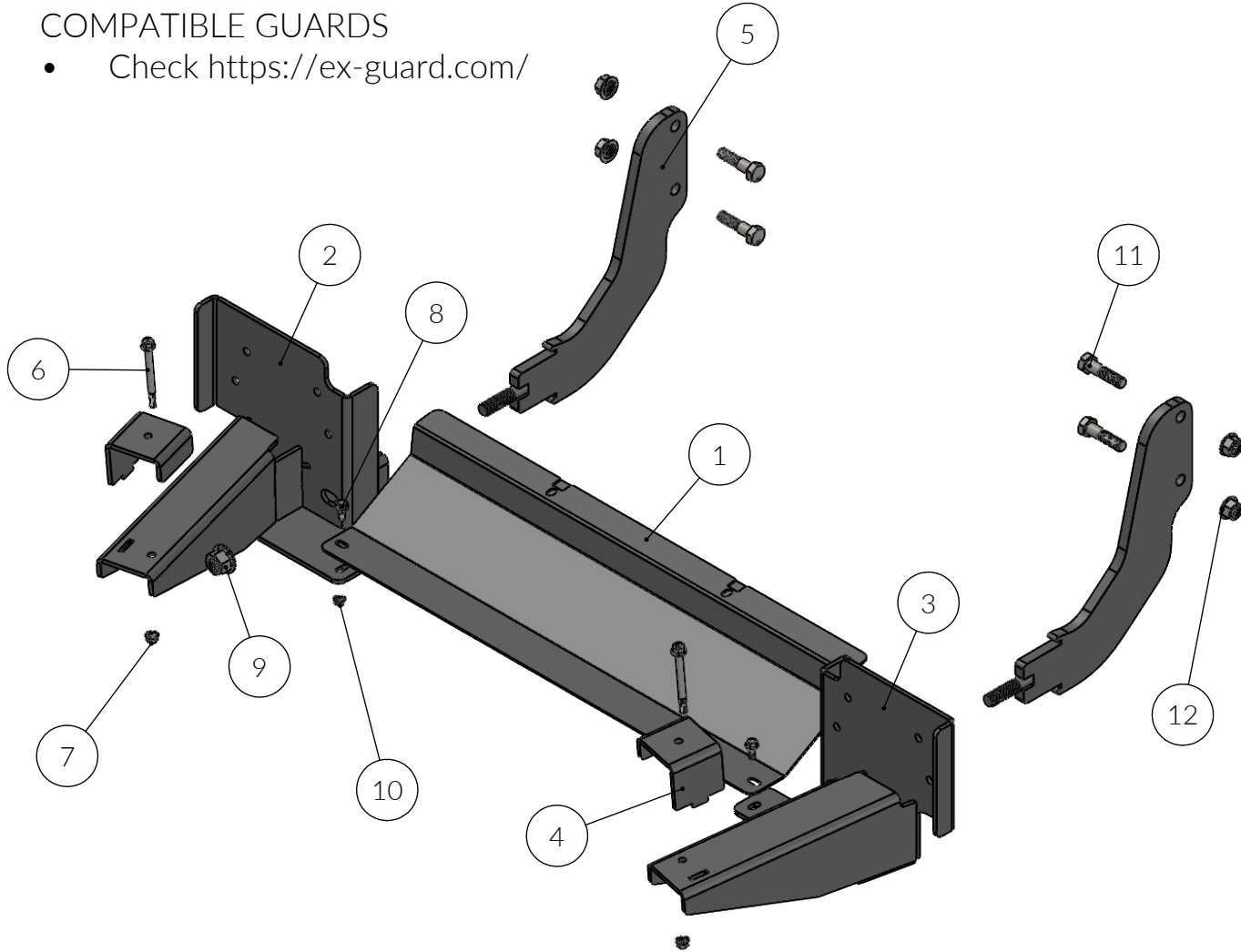


# PARTS LIST - CV-21FTR-BR10

## BOLT KIT - CV-BRK3

### COMPATIBLE GUARDS

- Check <https://ex-guard.com/>



ITEM NO.	PART NUMBER	DESCRIPTION	QTY.
1	CV-21FTR-BR05	SHROUD	1
2	CV-21FTR-BR10L	DRIVER SIDE FRAME BRACKET	1
3	CV-21FTR-BR10R	PASSENGER SIDE FRAME BRACKET	1
4	CV-21FTR-BR06	STIFFENER SUPPORT WASHER	2
5	CV-21FTR-BR03SA	MOUNT SUPPORT W/ 3/4" X 3" STUD	2
6	XG-001-37C400SHF8Y	3/8-16 X 4 FLANGE HEX HEAD BOLT	2
7	XG-001-37CNWF0Y	3/8-16 SERRATED FLANGE HEX NUT	2
8	XG-001-31C75SHF8Y	5/16 - 18 X 3/4 SERRATED FLANGE BOLT	2
9	XG-001-75CNWF0Y	3/4"-10 DISTORTED FLANGE HEX NUT	2
10	XG-001-31CNWF0Y	5/16 SERRATED FLANGE HEX NUT	2
11	XG-001-62C250HCS8Y	5/8-11 X 2 1/2" HEX HEAD BOLT	4
12	XG-001-62CNWF0Y	5/8-11 FLANGE AUTO LOCKNUT	4

ATTENTION!! Any Ex-Guard grille guard, bracket kit, or hardware must be used with corresponding Ex-Guard components. Use of any other product or brand with Ex-Guard products will immediately void the warranty provided by Ex-Guard Industries.



CALL FOR (888) 802-2777 FOR INSTALLATION QUESTIONS OR EMAIL INFO@EX-GUARD.COM

## TOOLS NEED FOR INSTALLATION

- 1/2" IMPACT DRIVER
- 1/4" IMPACT DRIVER
- DRILL WITH 3/8" DRILL BIT
- STRAIGHT BLADE SCREW DRIVER
- 1/2" WRENCH
- 9/16" WRENCH
- 15/16" WRENCH
- TORQUE WRENCH
- 1 1/8" DEEP SOCKET
- 15/16" SOCKET
- 9/16" SOCKET
- 1/2" SOCKET
- 10 MM SOCKET
- 13 MM SOCKET
- 17 MM SOCKET
- QTY 2 - ZIP TIES

## INCLUDED WITH THE GUARD AND BRACKET KIT

- QTY 2 - CV-13TR-BR03 GUARD BRACKETS
- QTY 1 - CV-13FTR-BR10R PASSENGER SIDE BRACKET
- QTY 1 - CV-13FTR-BR10R DRIVER SIDE BRACKET
- QTY 1 - CV-13FTR-BR05 SHROUD
- QTY 2 - CV-13FTR-BR06
- QTY 2 - 3/8" X 4 BOLTS
- QTY 2 - 3/8" FLAT WASHERS
- QTY 2 - 3/8" SERRATED FLANGE NUTS
- QTY 2 - 5/16" X 3/4" SERRATED FLANGE BOLTS
- QTY 2 - 5/16" SERRATED FLANGE NUTS
- QTY 4 - 5/8" X 2 1/2" BOLT
- QTY 4 - 5/8" SERRATED FLANGE NUTS
- QTY 2 - 3/4" SERRATED FLANGE NUTS

---

### STEP 1:

USING A FLAT SCREW DRIVER, RELEASE 2 CLIPS ON BOTH SIDES. 1 PER SIDE.



**STEP 2:**

REMOVE 10 BOLTS THAT SECURE THE SHROUD USING THE 10 MM SOCKET



**STEP 3:**

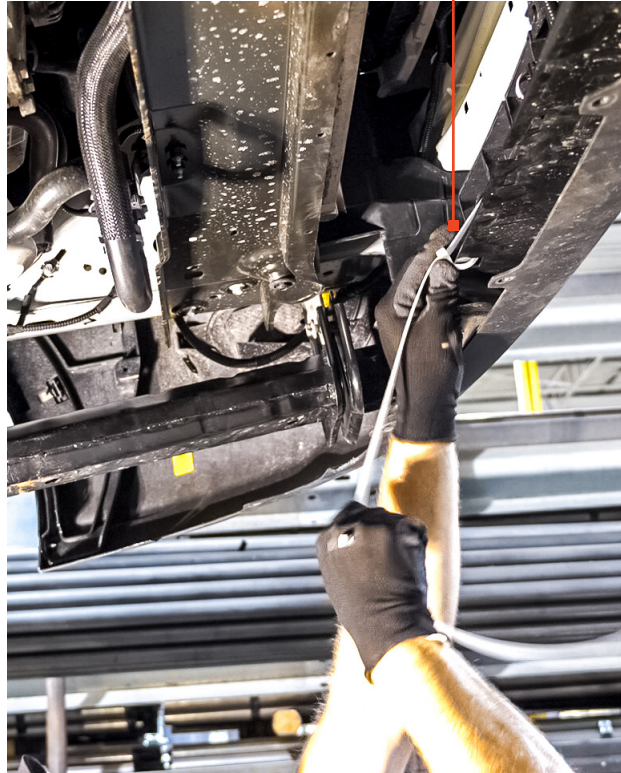
USING A 13 MM SOCKET, REMOVE THE 4 BOLTS FROM THE FRAME



**STEP 4:**  
INSTALL A ZIP TIE TO FACILITATE INSTALLING THE BRACKET



**STEP 5:**  
INSERT ONE OF THE FOUR BOLTS REMOVED IN STEP 3,  
AND TIGHTEN THE ZIP TIE, UNTIL YOU CAN REMOVE /  
INSERT THE BOLT WITHOUT ANY TROUBLE ALIGNING



**STEP 6:**

INSERT THE DRIVER SIDE BRACKET BETWEEN THE TWO PLATES AS SHOWN.



**STEP 7:**

RE-INSERT THE 4 BOLTS REMOVED EARLIER AND TORQUE TO 60 FT/LBS



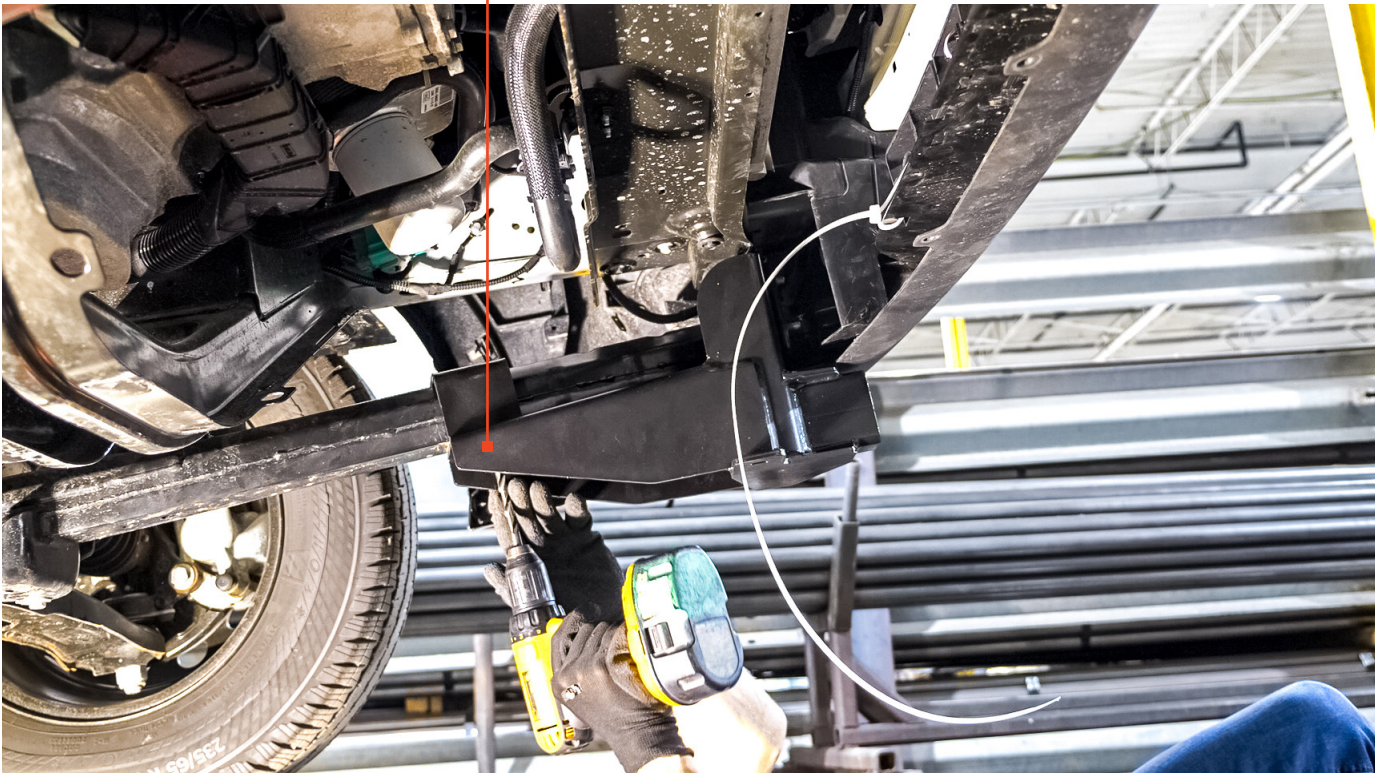
**STEP 8:**

POSITION BRACKET PART OVER THE TOP OF THE VEHICLE BRACE.



**STEP 9:**

DRILL A 3/8" HOLE THROUGH THE TOP SIDE OF THE VEHICLE BRACE AS SHOWN



**STEP 10:**

INSERT A 3/8" X 4" BOLT, WITH FLAT WASHER ON THE BOLT HEAD. TORQUE TO 60 FT/LBS



**STEP 11:**

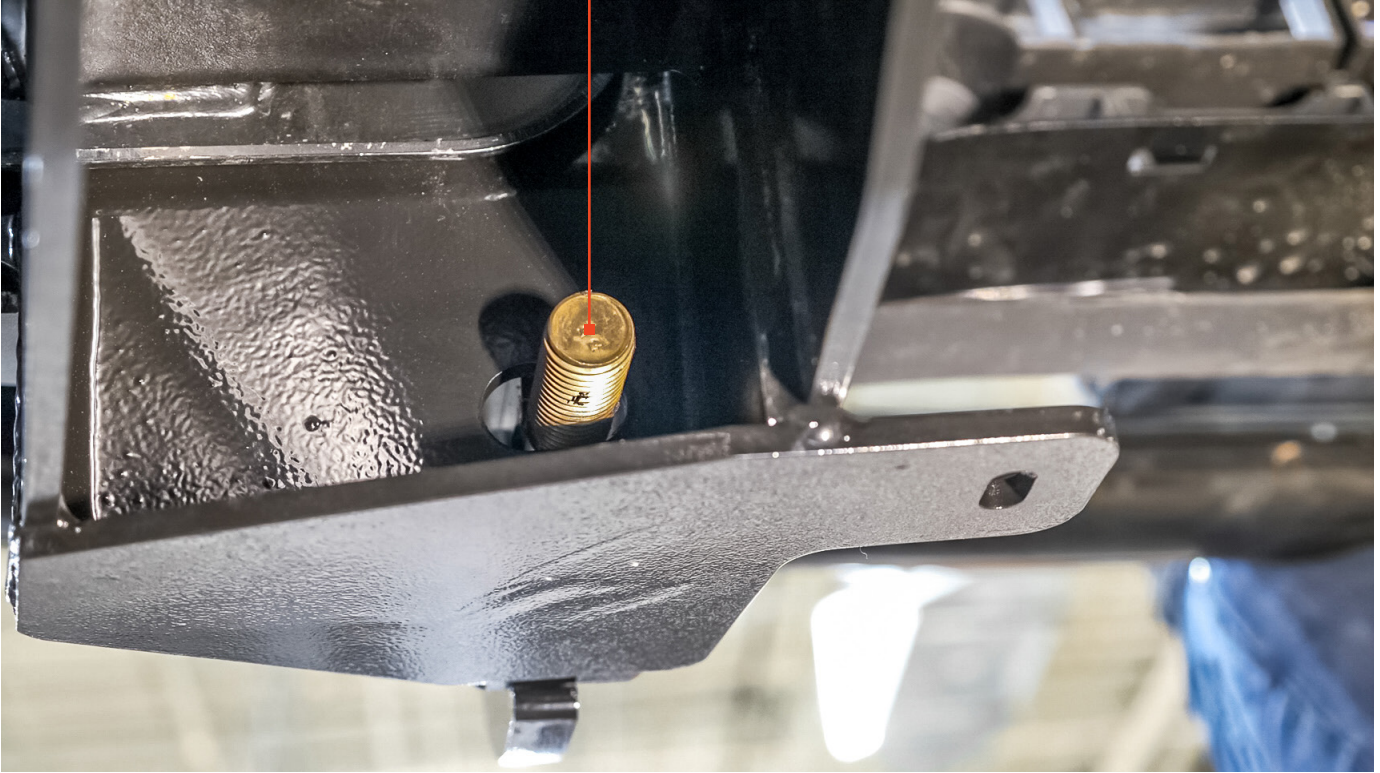
INSTALL THE BRACKETS TO THE GUARD USING THE 5/8"-11 X 2-1/2" BOLTS AND THE 15/16" SOCKET AND WRENCH. MAKE SURE TO ATTACH THE BRACKETS TO THE CENTER OF THE UPRIGHTS.





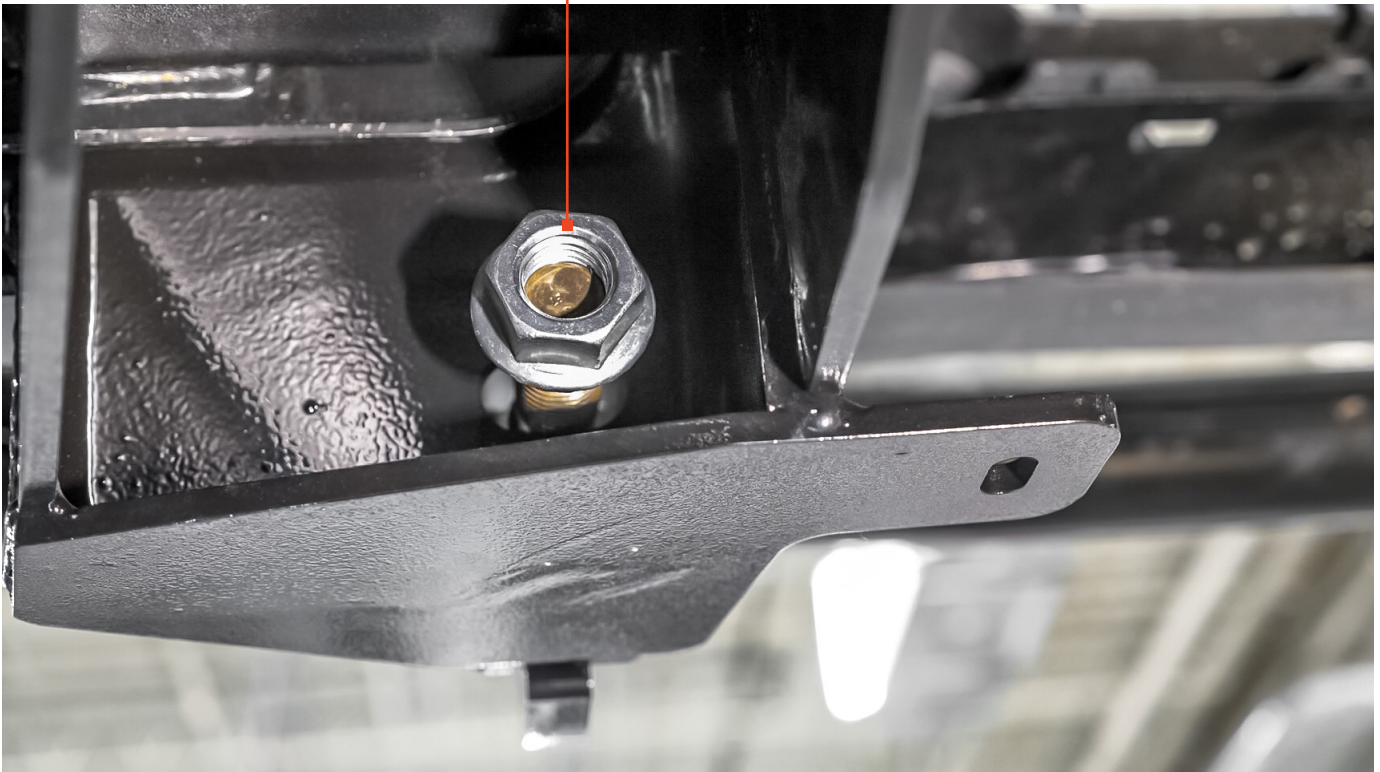
**STEP 12:**

INSERT THE GUARD BRACKETS INTO THE VAN BRACKETS BY SLIDING INTO THE RECEIVER TUBE.



**STEP 13:**

INSTALL THE 3/4-10" FLANGE NUT BY USING THE 1-1/8" SOCKET. TORQUE TO 250 FT/LBS. REPEAT ON THE OTHER SIDE.



**STEP 14:**

REMOVE THE FRONT TWO CLIPS FROM THE ORIGINAL SHROUD REMOVED AT THE START, BY USING A FLAT SCREW DRIVER



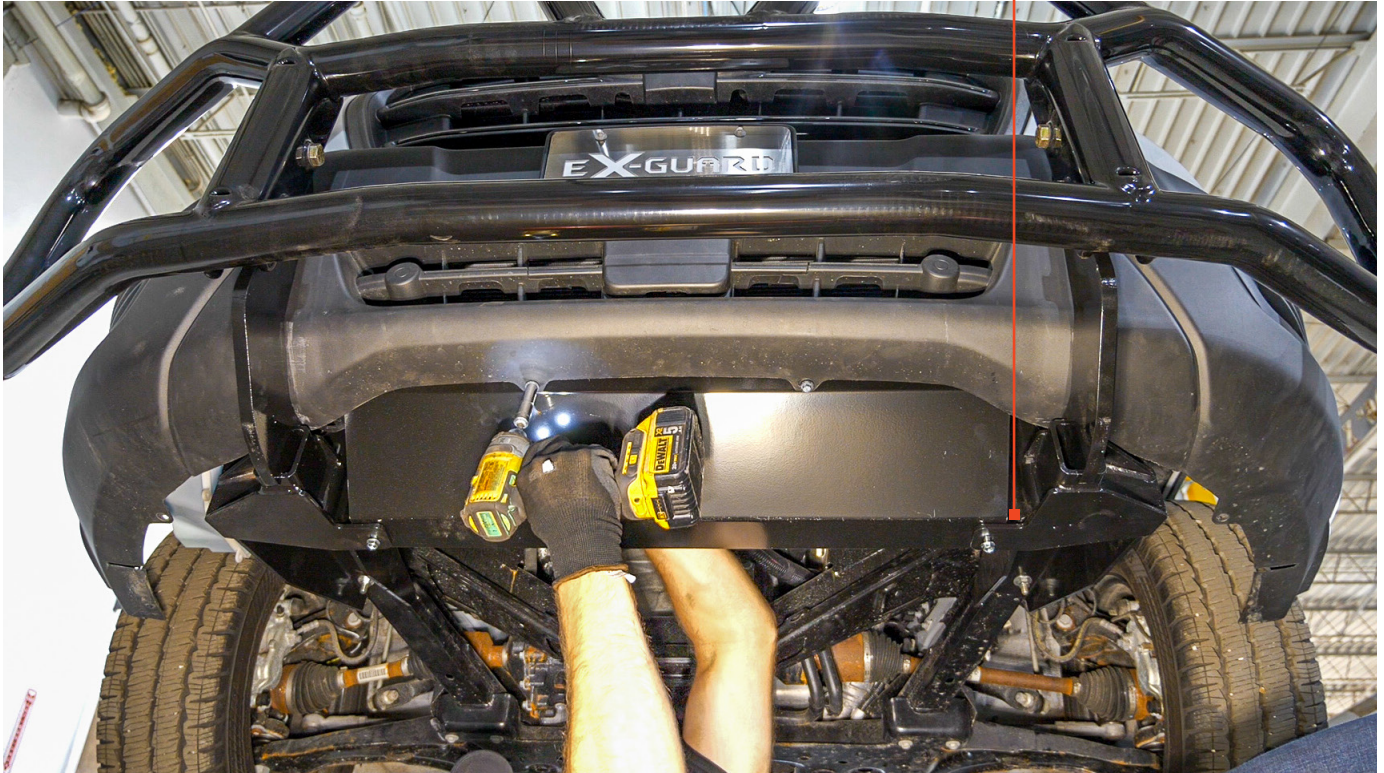
**STEP 15:**

INSERT ON THE NEW SHROUD. POSITION AS SHOWN, AND USE 2 OF THE 10 BOLTS REMOVED FROM STEP 2 TO SECURE THE SHROUD TO THE BUMPER SKIN



**STEP 16:**

USE THE 5/16"x3/4" BOLT AND NUT TO SECURE SHROUD TO BRACKET. ONCE THE 4 BOLTS ARE IN PLACE, TIGHTEN THE TOP 2 WITH A 10 MM SOCKET AND THE BOTTOM 2 WITH A 1/2" SOCKET.



**DRIVE SAFE**