



CV-15MSP-50



CV-15MSP-25

CV-15MSP-25 & CV-15MSP-50 INSTALLATION INSTRUCTIONS

EX-GUARD®

888.902.2777

CUSTOMERCARE@EX-GUARD.COM

EX-GUARD.COM

TOOLS NEED FOR INSTALLATION

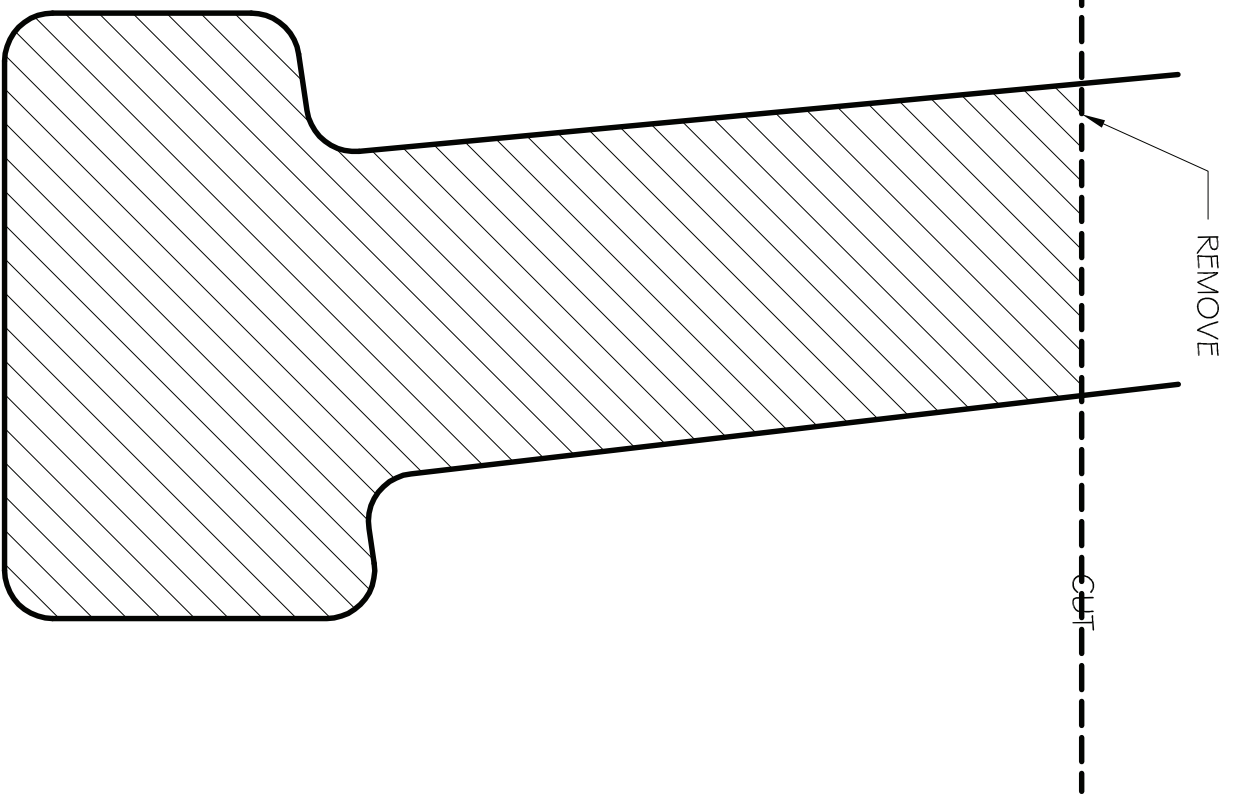
- 3/4" IMPACT DRIVER
- 5/8" IMPACT DRIVER
- 15/16" WRENCH
- 1/2" DRILL BIT
- LARGE STRAIGHT BLADE SCREW DRIVER
- SMALL STRAIGHT BLADE SCREW DRIVER
- BUMPER CLIP REMOVER
- JIG SAW
- TORQUE WRENCH
- 1 1/8" DEEP SOCKET
- 15/16" SOCKET
- T-25 TORX BIT
- T-45 TORX BIT

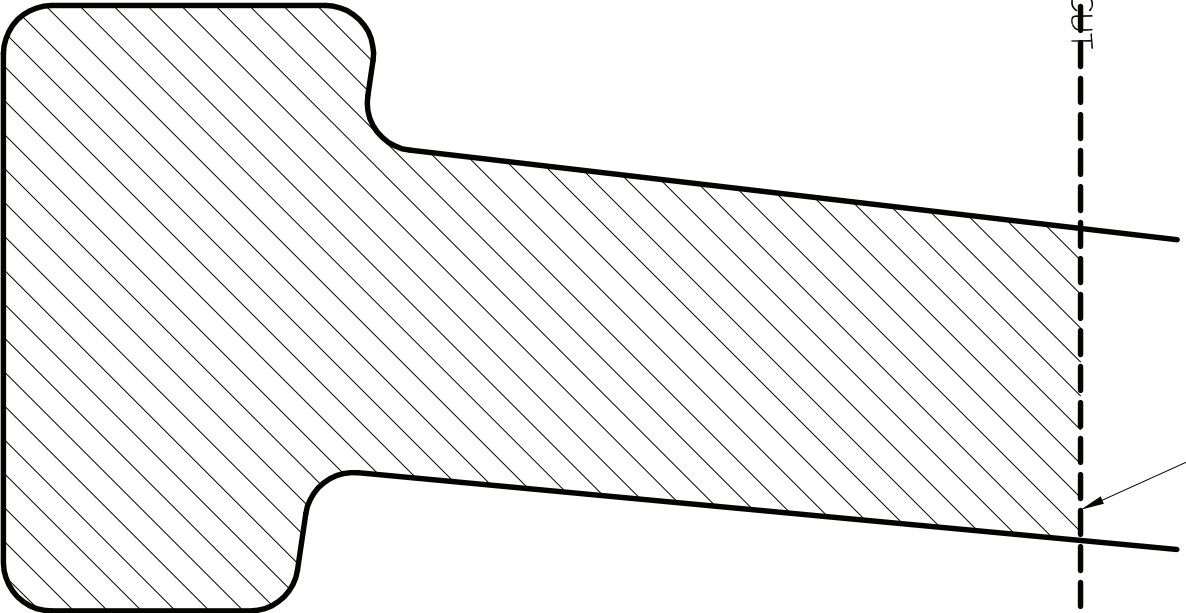
INCLUDED WITH THE GUARD AND BRACKET KIT

- QTY 2 - CV-15MSP-BR03SA GUARD BRACKETS
- QTY 1 - CV-15MSPDS
- QTY 1 - CV-15MSPPS
- QTY 1 - CV-15MSP-25
- QTY 2 - 3/4"-10 NYLON INSERT 18-8SS
- QTY 4 - 5/8-11 NYLON INSERT L/N 18-8 SS
- QTY 4 - 5/8-11 X 2-1/4 GR 8
- QTY 2 - CV-19MSP-BR06SA
- QTY 8 - M12-1.5X35 BOLTS
- CUT TEMPLATES

IF AT ANY TIME YOU NEED HELP OR HAVE A QUESTION, PLEASE FEEL FREE TO GIVE US A CALL AT 888.902.2777 OR EMAIL US AT CUSTOMERCARE@EX-GUARD.COM

DRIVER SIDE





CUT

REMOVE

CUT

CUT

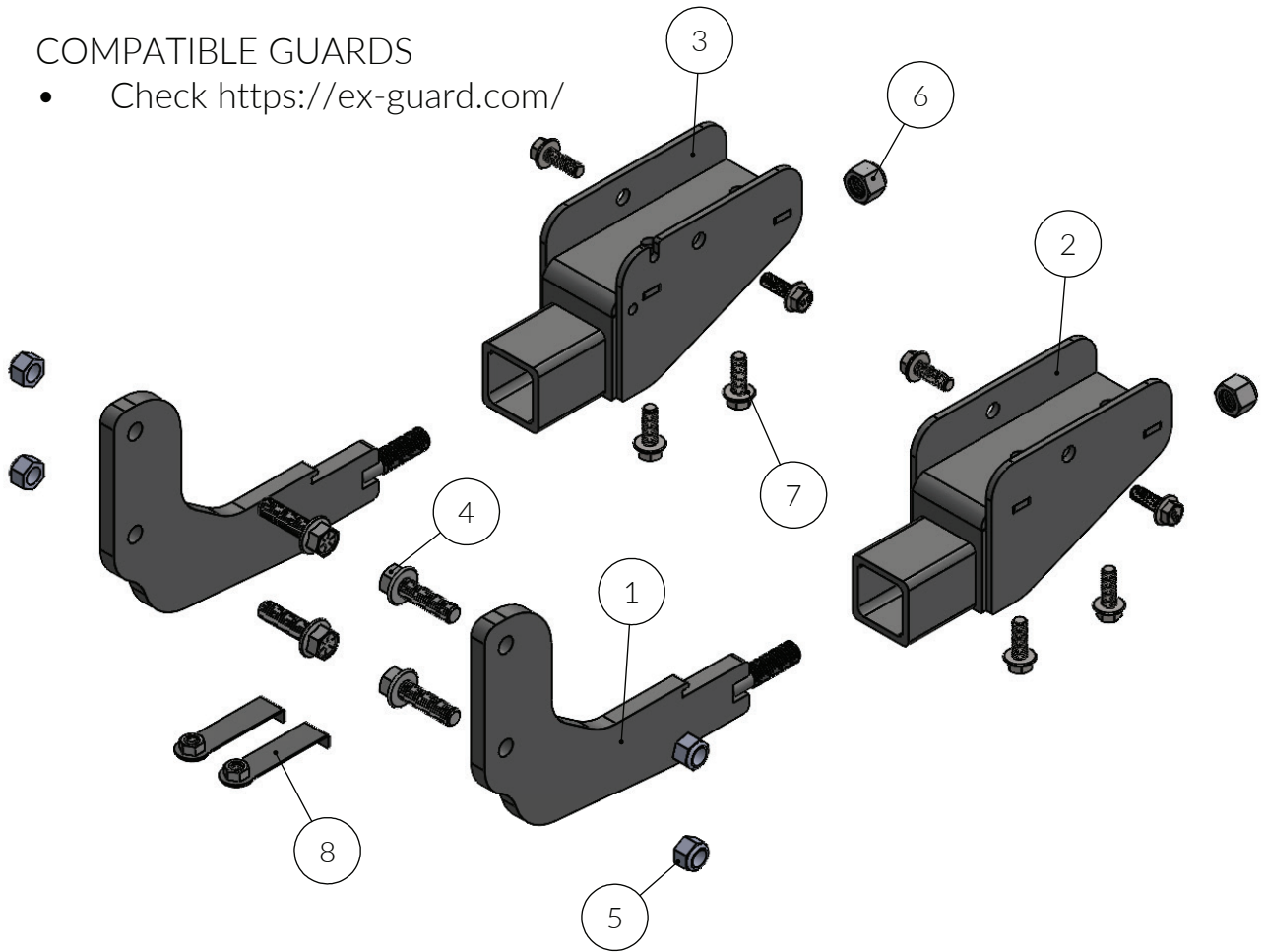
**PASSENGER
SIDE**

PARTS LIST - CV-15MSP-BR10

BOLT KIT - CV-BRK1

COMPATIBLE GUARDS

- Check <https://ex-guard.com/>



ITEM NO.	PART NUMBER	DESCRIPTION	QTY.
1	CV-15MSP-BR03SA	TRUCK MOUNTING ARM WELD	2
2	CV-15MSPDS	TRUCK MOUNTING BRACKET DS	1
3	CV-15MSPPS	TRUCK MOUNTING BRACKET PS	1
4	XG-001-62C225HCS8Y	5/8-11 X 2.25 FLANGE HEX HEAD BOLT	4
5	XG-001-62CNNE5	5/8-11 Nylon Insert L/N 18-8SS	4
6	XG-001-75CNNE5	3/4-10 NYLON INSERT 18-8 STAINLESS HEX NUT	2
7	XG-001-12C35SHFWZ	M12X1.75MMX35MM HEX HEAD	8
8	CV-19MSP-BR06SA	WRENCH ASSEMBLY	2

ATTENTION!! Any Ex-Guard grille guard, bracket kit, or hardware must be used with corresponding Ex-Guard components. Use of any other product or brand with Ex-Guard products will immediately void the warranty provided by Ex-Guard Industries.

MOUNTING INSTRUCTIONS: CV-15MSP

Mercedes-Benz, and Dodge Sprinter



1) TAPE DRIVER AND PASSENGER SIDE BUMPER TEMPLATE INPLACE. START WITH THE EDGE OF PAPER AT THE CORNER AS SHOWN, AND IN LINE WITH THE FORMED EDGE AS SHOWN.



2) TAKE A JIG SAW OR KNIFE AND CUT OUT THE PROFILE ON BOTH SIDES.



3) REMOVE BODY PINS FROM BUMPER/ FENDER ON PASSENGER SIDE TOTAL OF 5 THEN PULL BACK TO POP CLIPS AS SHOWN BELOW.



MOUNTING INSTRUCTIONS: CV-15MSP

Mercedes-Benz, and Dodge Sprinter

4) REMOVE BOLT THAT SUPPORTS DEF TANK ACCESSABLE FROM BEHIND BUMPER SKIN

5) REMOVE BOLT THAT SUPPORTS DEF TANK ACCESSABLE FROM UNDERNEATH VAN



WHEN INSTALLING, USE THIS HOLE TO INSERT THE WRENCH SUPPLIED, WHICH WILL POSITION THE NUT OVER THE HOLE DRILLED IN-TO THE FRAME

DRILL 1/2" HOLE WHERE THIS SMALL HOLE IS ON THE FRAME. ON BOTH FRAME RAILS.

6) REMOVE CROSSMEMBER AND DISCARD. (FOR VEHICLES WITHOUT THE CROSSMEMBER USE PROVIDED HARDWARE)

**PASSENGER
SIDE**



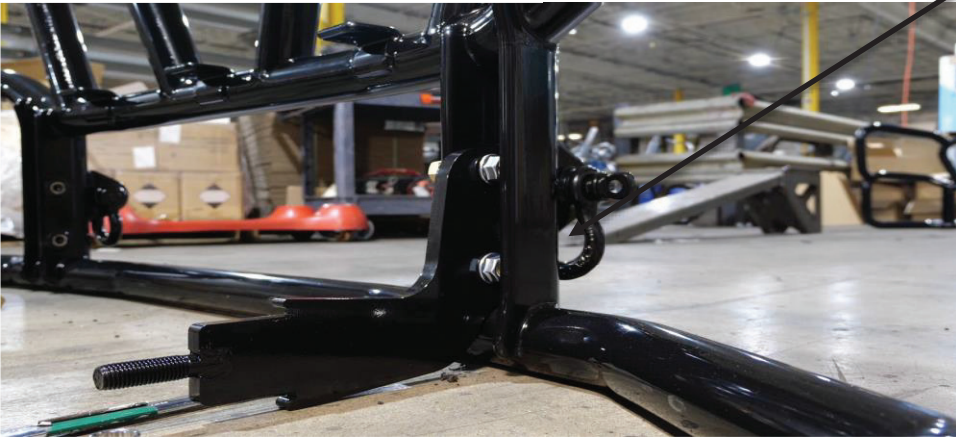
**DRIVER
SIDE**



MOUNTING INSTRUCTIONS: CV-15MSP

Mercedes-Benz, and Dodge Sprinter

- 7) INSTALL THE BRACKETS TO THE GUARD USING THE 5/8"-11 X 2-1/4" BOLTS AND THE 15/16" SOCKET AND WRENCH. MAKE SURE TO ATTACH THE BRACKETS TO THE CENTER OF THE UPRIGHTS.



- 8) INSERT THE GUARD BRACKETS INTO THE VAN BRACKETS BY SLIDING INTO THE RECEIVER TUBE.



MOUNTING INSTRUCTIONS: CV-15MSP

Mercedes-Benz, and Dodge Sprinter

9) INSTALL THE 3/4-10" FLANGE NUT BY USING THE 1-1/8" SOCKET. TORQUE TO 250 FT/LBS

