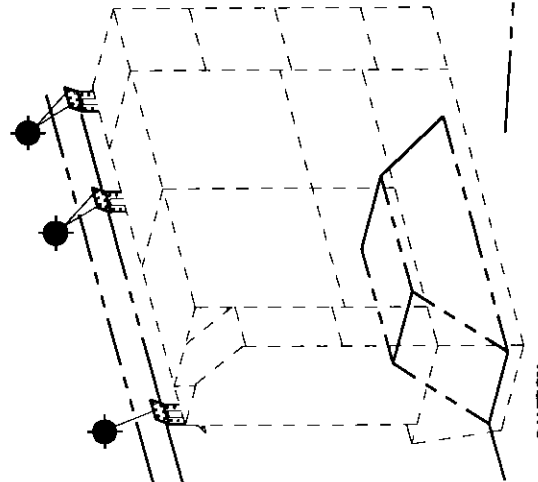


FASTENER GROUPS LISTED BELOW ARE USED FOR ASSEMBLY AND INSTALLATION. **SOME ASSEMBLY DRILLING IS REQUIRED.** PARTITION INSTRUCTIONS & FASTENERS ARE WITH THAT UNIT. USE 40 UNIT DRAWINGS TO IDENTIFY THEIR SEPARATE PARTS. CUSTOMER SPECIFIED SHELF DIMENSIONS ARE SHOWN HERE.

SYM.	FASTENERS	QTY	DRILL
ASSEMBLY FASTENERS IN CARTONS			
●	{ #8-32 x 3/8" THP.SCW.	(1) }	9/32
●	{ #8-32 HEX FLANGE NUT	(1) }	9/32
●	{ #14 THP. SCREW	(1) }	9/32
●	{ 1/4 EXT. L'WASHER	(1) }	9/32
●	{ 1/4-20 x 3/8" THP.SCW.	(1) }	9/32
●	{ 1/4 EXT. L'WASHER	(1) }	9/32
●	{ 1/4-20 x 1/2" THP.SCW.	(1) }	9/32
●	{ 1/4-20 HX. FLANGE NUT	(1) }	9/32
●	{ 1/4-20 x 3/4" HX.HD.SCW.	(1) }	9/32
●	{ 1/4-20 HX. FLANGE NUT	(1) }	9/32
INSTALLATION FASTENERS IN CARTONS			
●	{ 1/4-20 PLUSNUT "PB"	(4) }	13/32
●	{ 1/4-20 x 1" HH.SCW.FT	(4) }	13/32
●	{ 1/4 PLN WASH	(4) }	13/32
●	{ 1/4 SPLIT RING L'WASHER	(4) }	13/32
●	{ 1/4-20 PLUSNUT "PB"	(3) }	13/32
●	{ 1/4-20 x 1-1/2" HH.SCW.FT	(3) }	13/32
●	{ 1/4 PLN WASH	(3) }	13/32
●	{ 1/4 SPLIT RING L'WASHER	(3) }	13/32
●	{ 1/4 PLN. WASHER	(6) }	9/32
●	{ 1/4-20 HX.STOP NUT	(3) }	9/32
●	{ 1/4-20 x 1-1/2" HH.SCW.FT	(3) }	9/32
●	{ 1/2 PLN. WASHER	(3) }	9/32
●	PLUSNUT TOOL	(1)	



CAUTION:
DRILL THRU FLOOR WITH CARE
WATCH FOR GAS TANK, CONTROL
LINES, & ELECTRICAL WIRING.

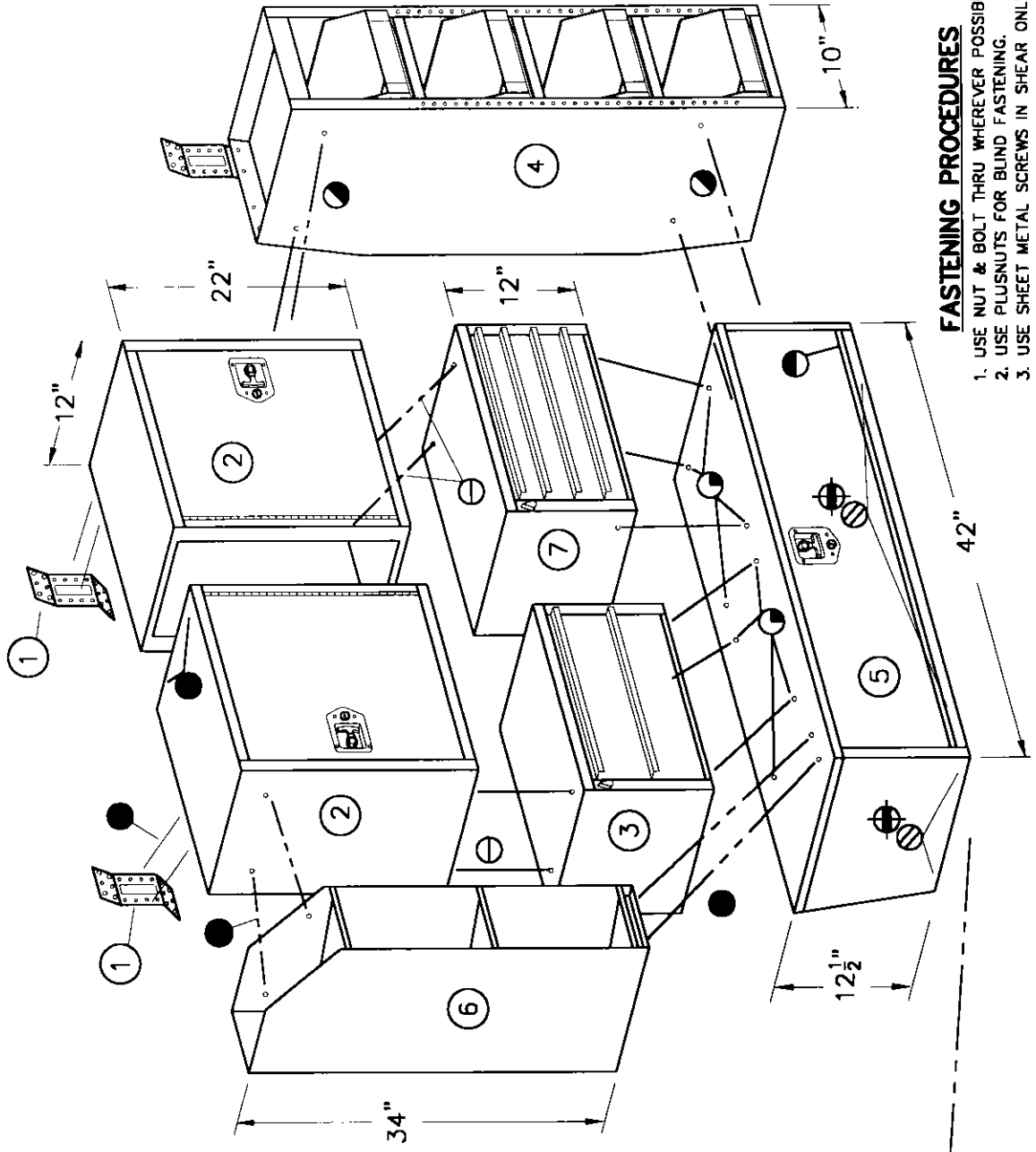
ADRIAN STEEL CO.
908 JAMES STREET
ADRIAN, MI 49221
517/265-6184

MD534 MODULE SPECIAL
DWR/CAB/RACK UNIT
14 x 46 x 52

DWG BY	ECN#	DATE	C-K'D BY	PACKAGE#	ISS
JLC	7398	6/02/04	RW	MD534	A
PACKAGE WEIGHT -		193.30 #	REF -	20364	

ITEM	PART NO.	DESCRIPTION	QTY.
1	MB111	MOUNT BRACKET W/FAS	2
2	12	CABINET 12x22x18	2
3	19	2-DRAWER MEDIUM	1
4	33WB	SHELF / RACK WITH BINS	1
5	40	WHEELHOUSE BIN - KD	1
6	43	CATALOG FILE 34"	1
7	9	4-DRAWER SHALLOW	1

ASSEMBLE EACH CABINET/DRAWER UNIT WITH ASSEMBLY SHEETS INCLUDED WITH EACH UNIT. SQUARE EACH BEFORE JOINING TOGETHER.
MATCH EACH COMPONENT UP AND USE ALL JOINING FASTENERS TO TIE EACH COMPONENT TOGETHER.
UNIT IS SHOWN FOR STREET SIDE INSTALLATION, AND CAN BE ASSEMBLED OPPOSITE IF REQUIRED.



FASTENING PROCEDURES

1. USE NUT & BOLT THRU WHEREVER POSSIBLE.
2. USE PLUSNUTS FOR BLIND FASTENING.
3. USE SHEET METAL SCREWS IN SHEAR ONLY.