

FAS-TENER GROUPS LISTED BELOW ARE USED FOR ASSEMBLY AND INSTALLATION. **SOME ASSEMBLY DRILLING IS REQUIRED.** PARTITION INSTRUCTIONS & FASTENERS ARE WITH THAT UNIT. USE KD UNIT DRAWINGS TO IDENTIFY THEIR SEPARATE PARTS. CUSTOMER SPECIFIED SHELF DIMENSIONS ARE SHOWN HERE.

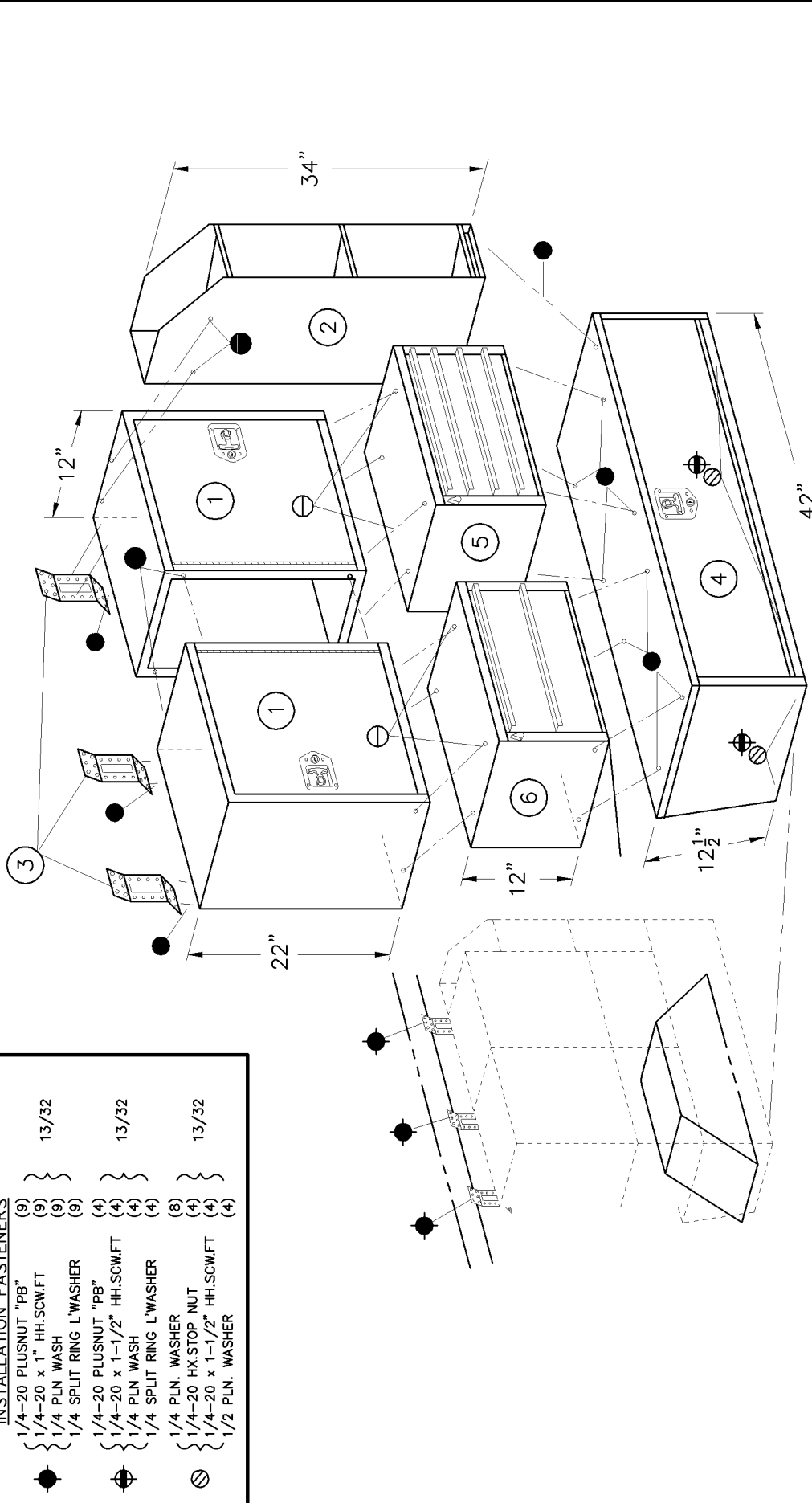
ADRIAN STEEL CO.
 906 JAMES STREET
 ADRIAN, MI 49221
 517/265-6194

DWR/CAB MOD

DWG BY: 6071 ECN#: DATE: 6/8/02 CHK BY: PACKAGE# ISS: A
 BDS: REF: 10234
 PACKAGE WEIGHT- 132.18 # HCG= 21 VCG= 23

SYM.	FASTENERS	QTY	DRILL
●	ASSEMBLY FASTENERS		
●	{ 1/4-20 x 1/2" THP.SCW. (20) }	{ (20) }	{ 9/32 }
●	{ 1/4-20 HX. FLANGE NUT (20) }	{ (20) }	{ 9/32 }
⊖	{ 1/4 X 3/4 "A" THP. SCW. (16) }	{ (16) }	{ 3/16 }
⊖	{ 1/4 EXT. TOOTH L'WASH (16) }	{ (16) }	{ 3/16 }
●	INSTALLATION FASTENERS		
●	{ 1/4-20 PLUSNUT "PB" (9) }	{ (9) }	{ 13/32 }
●	{ 1/4-20 x 1" HH.SCW.FT (9) }	{ (9) }	{ 13/32 }
●	{ 1/4 PLN WASH (9) }	{ (9) }	{ 13/32 }
●	{ 1/4 SPLIT RING L'WASHER (4) }	{ (4) }	{ 13/32 }
●	{ 1/4-20 PLUSNUT "PB" (4) }	{ (4) }	{ 13/32 }
●	{ 1/4-20 x 1-1/2" HH.SCW.FT (4) }	{ (4) }	{ 13/32 }
●	{ 1/4 PLN WASH (4) }	{ (4) }	{ 13/32 }
●	{ 1/4 SPLIT RING L'WASHER (4) }	{ (4) }	{ 13/32 }
●	{ 1/4 PLN. WASHER (8) }	{ (8) }	{ 13/32 }
●	{ 1/4-20 HX.STOP NUT (4) }	{ (4) }	{ 13/32 }
●	{ 1/4-20 x 1-1/2" HH.SCW.FT (4) }	{ (4) }	{ 13/32 }
●	{ 1/2 PLN. WASHER (4) }	{ (4) }	{ 13/32 }

ITEM	PART NO.	DESCRIPTION	QTY.
1	12	CABINET	2
2	43	CATALOG FILE	1
3	MB111	MOUNTING BRACKET	3
4	40	KD BIN	1
5	9	4-DRAWER SHALLOW	1
6	19	2-DRAWER DEEP	1



FASTENING PROCEDURES

1. USE NUT & BOLT THRU WHEREVER POSSIBLE.
2. USE PLUSNUTS FOR BLIND FASTENING.
3. USE SHEET METAL SCREWS IN SHEAR ONLY.

CAUTION:
 DRILL THRU FLOOR WITH CARE
 WATCH FOR GAS TANK, CONTROL
 LINES, & ELECTRICAL WIRING.