

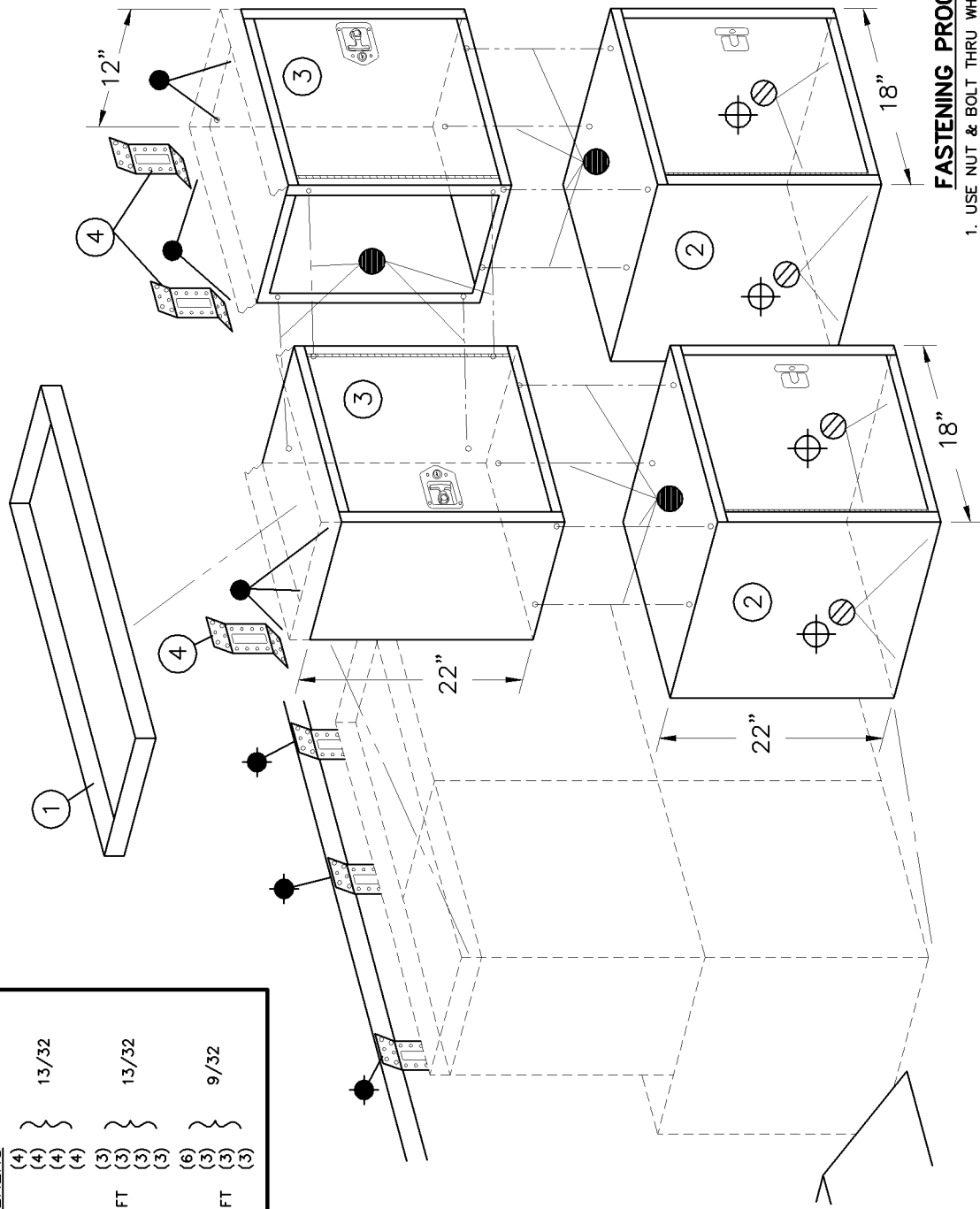
FASTENER GROUPS LISTED BELOW ARE USED FOR ASSEMBLY AND INSTALLATION. SOME ASSEMBLY DRILLING IS REQUIRED. PARTITION INSTRUCTIONS & FASTENERS ARE WITH THAT UNIT. USE KD UNIT DRAWINGS TO IDENTIFY THEIR SEPARATE PARTS. CUSTOMER SPECIFIED SHELF DIMENSIONS ARE SHOWN HERE.

**ADRIAN STEEL CO.**  
 906 JAMES STREET  
 ADRIAN, MI 49821  
 517/265-6194

**CABINET MODULE**

DWG. BY	ECN#	DATE	CHK BY	PACKAGE#	ISS.
BDS	6071	6/8/02		S/L MD501	A
PACKAGE WEIGHT-	116.16 #		REF	10229	
			HCG=	18	VCG= 21
<b>ITEM</b>	<b>PART NO.</b>	<b>DESCRIPTION</b>	<b>QTY.</b>		
1	4A	#4A PARTS TRAY (2X12X36)	1		
2	1	#1 CABINET W/SHELF	2		
3	12	#12 CABINET W/SHELF	2		
4	MB111	MOUNTING BRACKET	3		

SYM.	FASTENERS	QTY	DRILL
●	ASSEMBLY FASTENERS		
	{ 1/4-20 x 1/2" THP.SCW. (50) }		9/32
	{ 1/4-20 HX. FLANGE NUT (50) }		
●	INSTALLATION FASTENERS		
	{ 1/4-20 PLUSNUT "PB" (4) }		13/32
	{ 1/4-20 x 1" HH.SCW.FT (4) }		
	{ 1/4 PLN. WASH (4) }		
	{ 1/4 SPLIT RING L'WASHER (4) }		
⊕	{ 1/4-20 PLUSNUT "PB" (3) }		13/32
	{ 1/4-20 x 1-1/2" HH.SCW.FT (3) }		
	{ 1/4 PLN. WASH (3) }		
	{ 1/4 SPLIT RING L'WASHER (3) }		
⊗	{ 1/4 PLN. WASHER (6) }		9/32
	{ 1/4-20 HX.STOP NUT (3) }		
	{ 1/4-20 x 1-1/2" HH.SCW.FT (3) }		
	{ 1/2 PLN. WASHER (3) }		



**CAUTION:**  
 DRILL THRU FLOOR WITH CARE  
 WATCH FOR GAS TANK, CONTROL  
 LINES, & ELECTRICAL WIRING.

**FASTENING PROCEDURES**  
 1. USE NUT & BOLT THRU WHEREVER POSSIBLE.  
 2. USE PLUSNUTS FOR BLIND FASTENING.  
 3. USE SHEET METAL SCREWS IN SHEAR ONLY.