

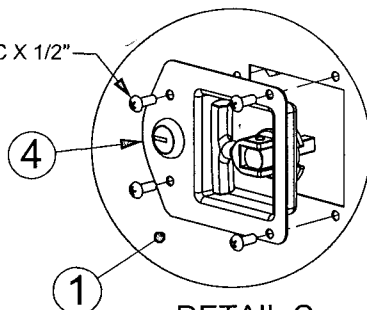
ITEM NO.	PART NUMBER	DESCRIPTION	QTY.
1	07060-0	CABINET SUB-ASM (3857)	1
2	07088-0	BOTTOM, #1 CABINET	1
3	LOGO-SM	.875"X3.0"ADRIAN STEEL LO	1
4	21000-0	Folding T-Handle	1
5	1A	SHELF, #1 CABINET	1
6	BAG0003-0	#3 BAG FOR #1 CAB, #2 DWR	1
7	CRT03857-0	CARTON #1 / SPECIAL PKG	1
8	CRT03857-A	CARTON, PAD FOR #1	1

REVISION
LEVEL: D

Part
Number: 1

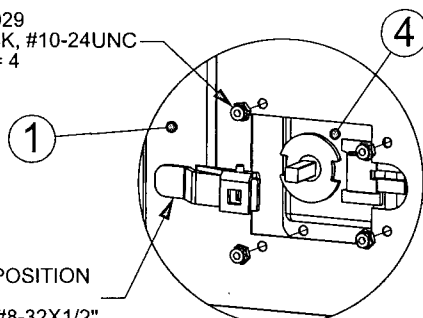
FOR REFERENCE ONLY!

FAS0021
SCREW, RHP, #10-24UNC X 1/2"
QTY = 4



DETAIL C
SCALE 1 : 4

FAS0029
NUT, NYLON LOCK, #10-24UNC
QTY = 4



DETAIL D
SCALE 1 : 4

LATCH PAWL, ADJUST POSITION
AS REQ'D
SECURE w/SETSCREW, #8-32X1/2"

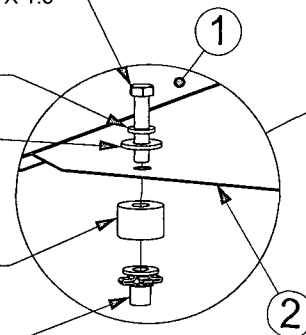
FAS0092
SCREW, HH, 5/16-18UNC X 1.5"
QTY = 4

FAS0098
WASHER, LOCK, SPLIT, 5/16"ID
QTY = 4

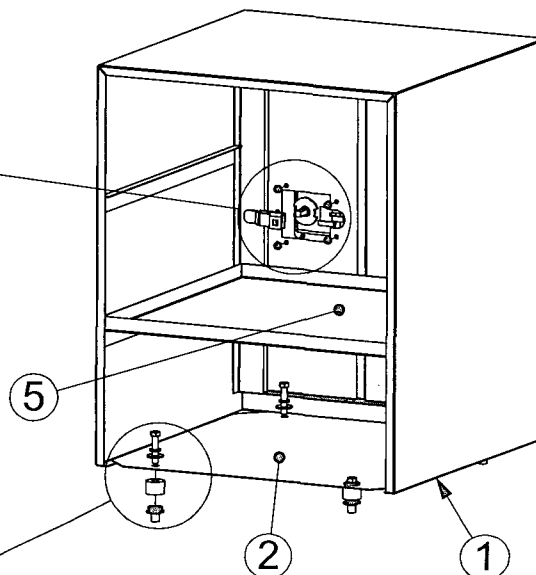
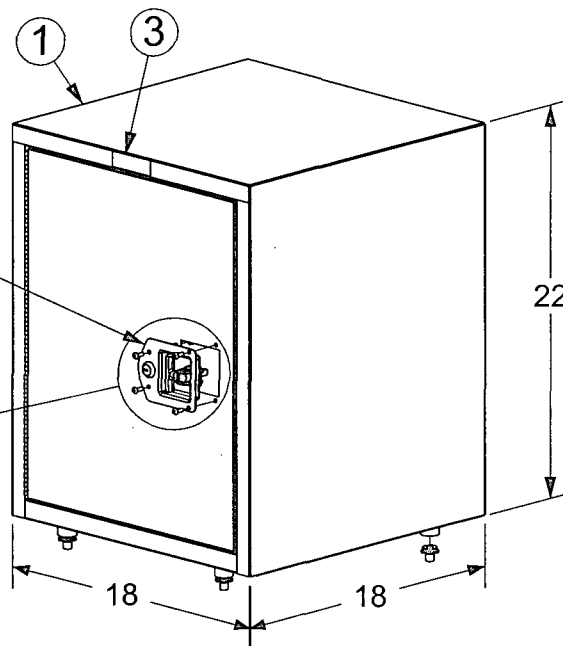
FAS0086
WASHER, FLAT, 5/16"ID
QTY = 4

03927-1 or 03927-2
SPACER, C/F, FLOOR (11/32 or 11/16)
QTY = 4

FAS0091
PLUSNUT, 5/16-18UNC
QTY = 4



DETAIL E
SCALE 1 : 4



NOTES:

- 07088-0 "CABINET BOTTOM" SHIPPED LOOSE WITH 1A "SHELF, FOR #1 CAB."
- BACK PANEL OF CABINET NOT SHOWN IN VIEW SO THAT INSTALLATION HDW ARE VISIBLE.

PRINTED DOCUMENT IS UNCONTROLLED

12-01-02
Sheet 1 of 1

THIS PRODUCT IS SUBJECT TO CHANGE.
ADRIAN STEEL COMPANY RESERVES THE RIGHT TO
CHANGE THE PRODUCT OF IT'S DESIGN WITHOUT
PRIOR NOTICE.

Shipping Wt. (Lbs.):

31.57

Coating/Finish:

GrayPwddct

Do Not Scale This Drawing!

THIS DRAWING IS THE PROPERTY OF ADRIAN STEEL COMPANY
AND IS NOT TO BE USED IN ANY MANNER DETRIMENTAL TO
THE INTERESTS OF ADRIAN STEEL COMPANY.

ADRIAN STEEL
VAN AND PICKUP EQUIPMENT
906 James St.
Adrian, MI 49221
517.265.6194

Part Description: **CABINET, #1, 18"x22"x18"**

Part
Number: 1

REVISION
LEVEL:

D