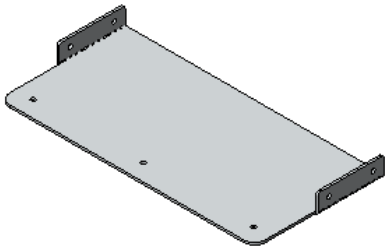
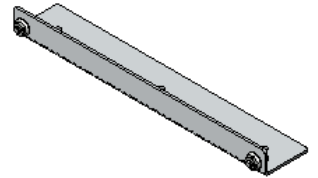


QUICK START GUIDE



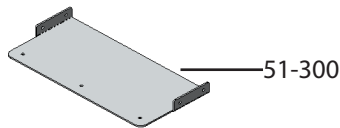
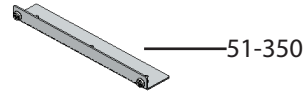
5014 Partslider Organizer Floor Mount Kit



PHASE 1 – ASSEMBLY

1.1 SETUP

1.1.1 Unpack components; compare with the bill of materials.



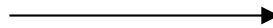
1.1.2 Verify all parts are present.

BILL OF MATERIALS

Item No.	Description	Qty.
51-300	Floor mounting plate, Partslider	1
51-350	Floor mounting angle, Partslider	1
90-5004	Fastener Kit	1

1.1.3 Fastener kits.

90 - 5004 Fastener Kit



Fastener Install

- 4x  # 96-202 Closed Rivet 3/16 × 1/4"
- 6x  # 92-100 Hex Screw #14 × 3/4" ZINC
- 6x  # 92-104 Hex Screw #14 × 1-1/4" ZINC
- 2x  # 90-700 Hex Bolt 1/4" -20 × 1/2" ZINC
- 2x  # 94-106 Lock Nut 1/4" ZINC

4x



6x



6x



2x

