



ADRIAN STEEL®

Expect More. Get More!



BUSINESS CHOICE

PROGRAM PACKAGES



2007

Commercial Customer Bin Package

Upgrade with BasePlus!

Upgrade your No-Charge GMBC Commercial Package to a BasePlus Trade Specific Package.

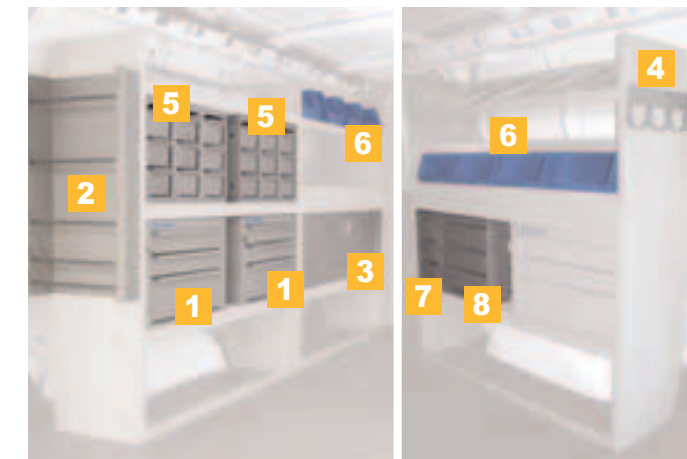


No Charge Package 1

MSRP \$1939

No Customer Cost

| Interior Package | Adrian Steel Commercial Bin Package | Advantage |
|---------------------------------|--|-----------|
| Partition | Full height and width partition to ensure theft deterrence. Optional equipment includes a sliding door and 3" setback. | |
| Welded Shelving | Two welded shelves measuring 46"H x 42"W x 14"D each on streetside, and one on curbside maximizes storage space. | |
| Lock-N-Latch Three Drawer Combo | Lock up small parts and tools in this exclusive Adrian Steel locking drawer unit. | |
| Shelving Fastener Points | 61 total fastening points for interior equipment | |
| Availability | Comprehensive distribution of over 300 distributors nationwide with Adrian Steel Certified Installers. | |
| Contoured End Panels | Contoured top and bottom maximizing aisle space. | |
| Open Floor Design | Open floor space allows end user to maximize floor space. | |
| Easily Upgradeable | Add drawers, bins, hooks, files, reel holders, tank holders, locking doors...whatever you need to customize your interior. | |



BasePlus Electrical Package

| Item | Model | Description | Qty |
|--------------------------------|----------|----------------------|-----|
| No Charge Interior PLUS | | | |
| 1 | 919 | Three Drawer Cabinet | 2 |
| 2 | WRH5 | Wire Reel Holder | 1 |
| 3 | DK544 | Door Kit | 1 |
| 4 | TA1 | Hook Bar | 1 |
| 5 | DS36012H | Drawer System | 2 |
| 6 | 28 | Plastic Bin | 8 |
| 7 | DC6 | Drawer Component 6" | 1 |
| 8 | DC12 | Drawer Component 12" | 1 |



BasePlus Plumbing Package

| Item | Model | Description | Qty |
|--------------------------------|-------|----------------------|-----|
| No Charge Interior PLUS | | | |
| 1 | 919 | Three Drawer Cabinet | 2 |
| 2 | VMA36 | Vice Mount Assembly | 1 |
| 3 | DK544 | Door Kit | 1 |
| 4 | TA1 | Hook Bar | 2 |
| 5 | 28 | Plastic Bin | 4 |
| 6 | 9 | Four Drawer Shallow | 1 |
| 7 | 19 | Two Drawer Medium | 1 |
| 8 | DC6 | Drawer Component 6" | 1 |
| 9 | DC12 | Drawer Component 12" | 1 |



BasePlus HVAC Package

| Item | Model | Description | Qty |
|--------------------------------|-----------|----------------------|-----|
| No Charge Interior PLUS | | | |
| 1 | 919 | Three Drawer Cabinet | 2 |
| 2 | WTR230150 | Tank Rack | 1 |
| 3 | DK544 | Door Kit | 1 |
| 4 | TA1 | Hook Bar | 1 |
| 5 | DS36012H | Drawer System | 1 |
| 6 | DC12 | Drawer Component 12" | 3 |
| 7 | 28 | Plastic Bin | 8 |



BasePlus General Service Package

| Item | Model | Description | Qty |
|--------------------------------|----------|----------------------|-----|
| No Charge Interior PLUS | | | |
| 1 | 919 | Three Drawer Cabinet | 2 |
| 2 | DK544 | Door Kit | 1 |
| 3 | DC12 | Drawer Component 12" | 3 |
| 4 | TA1 | Hook Bar | 1 |
| 5 | DS36012H | Drawer System | 1 |

Full Size Van Upgrade Packages

Full Size Van Upgrade Packages



- 2. Industrial Ladder Rack 135" WB
MSRP \$1395 No Customer Cost
- 3. Industrial Ladder Rack 155" WB
MSRP \$1395 No Customer Cost



- 4. General Service Interior
MSRP \$2598 Customer Cost \$430



- 7. Locksmith Interior
MSRP \$3058 Customer Cost \$825



- 8. Poly Liner 135" WB
MSRP \$1756 Customer Cost \$315
- 9. Poly Liner 155" WB
MSRP \$2150 Customer Cost \$600

Not available on vans with Auxiliary Rear Heat or Rear A/C.



- 5. Plumbing, Heating & AC Repair
MSRP \$3290 Customer Cost \$1020



- 6. Electric & Gas Appliance Repair
MSRP \$2897 Customer Cost \$770

Note: Packages 1, 4, 5, 6, and 7 require an extra cost of \$57 for vans with auxiliary rear heat.

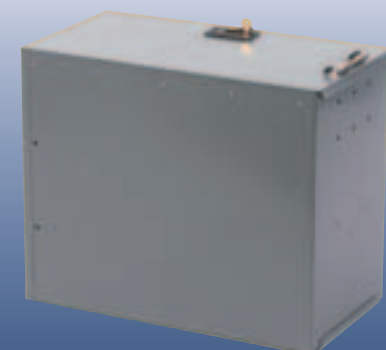
Upgrade Your Package



WKC1FSVGM3
Three Inch Setback
Partition Wing Kit
Provides 3" More
Cab Room!

S1M1SC1FSV
Dual Sliding Door Partition

Upgrade Your Package



DDF 12
Driver Data
File

LR6100
Single
LOADSRITE Ladder Rack



Left Hand Door Van Packages

Left Hand Door Van Packages



NO CHARGE!

1. Commercial Customer Bin
MSRP \$2031 No Customer Cost

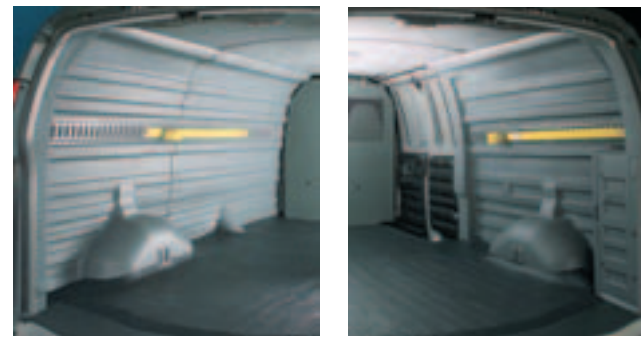


5. Plumbing, Heating & A/C Repair
MSRP \$3281 Customer Cost \$1020



NO CHARGE!

2. Industrial Ladder Rack 135" WB
MSRP \$1395 No Customer Cost



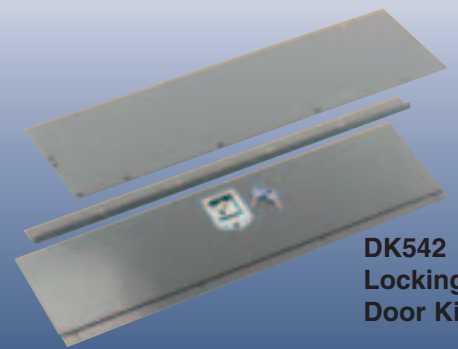
8. Poly Liner 135" WB
MSRP \$1685 Customer Cost \$315
Not available on vans with Auxiliary Rear Heat or Rear A/C.



6. Electric & Gas Appliance Repair
MSRP \$2982 Customer Cost \$770

Note: Packages 1, 5, and 6 require an extra cost of \$57 for vans with auxiliary rear heat.

Upgrade Your Package

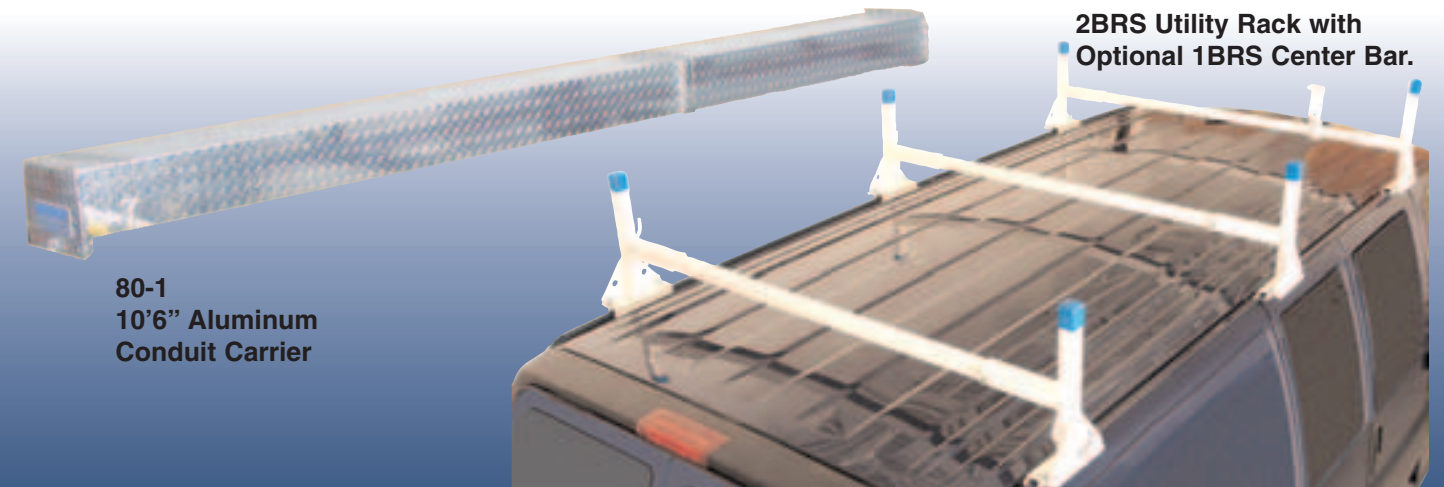


DK542
Locking
Door Kit

CB7
Literature
Holder



CL 1446D & CL 1446R
Cabinet Lockers



80-1
10'6" Aluminum
Conduit Carrier

2BRS Utility Rack with
Optional 1BRS Center Bar.

Access/Pro Van Packages

Uplander Cargo Van Packages



NO CHARGE!

1. Commercial Customer Bin
MSRP \$2031 No Customer Cost



NO CHARGE!

2. Industrial Ladder Rack 135" WB
MSRP \$1395 No Customer Cost



NO CHARGE!

1. Commercial Bin Package
MSRP \$1016 No Customer Cost



NO CHARGE!

2. Partition
MSRP \$389 No Customer Cost

Note: Packages 1, 5, and 6 require an extra cost of \$57 for vans with auxiliary rear heat.



5. Plumbing, Heating & A/C Repair
MSRP \$3280 Customer Cost \$1020



6. Electric & Gas Appliance Repair
MSRP \$2982 Customer Cost \$770

Note: When purchasing a 2006 or 2007 Access/Pro van from dealer inventory, the Commercial Bin Package 1 will more than likely already be installed in the vehicle. The other GM Business Choice options are not available on these particular stock Access/Pro units already upfitted with Package 1 in dealer inventory.



63-MVU
Double
Grip-Lock
Ladder Rack

Upgrade Your Package

LK8 Ladder Keeper

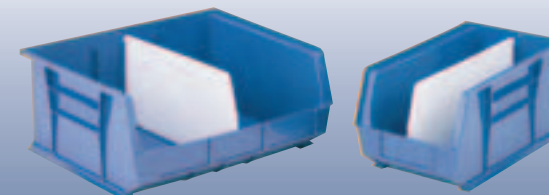


SPT 4P
Poly
Totes &
Rack



SPT 4
Combo
Totes &
Rack

SPT 4S
Steel
Totes &
Rack



22 & 24
Plastic Bins

919
Three
Drawer
Combo



9
Four
Drawer
Shallow

19
Two
Drawer
Medium

Accessories available from your local Adrian Steel distributor.

www.adriansteel.com

Full Size Pickup Packages



1. Double Lid Crossbox & Side Boxes
MSRP \$1386 Customer Cost \$310



2. Single Lid Crossbox & Side Boxes
MSRP \$1386 Customer Cost \$310

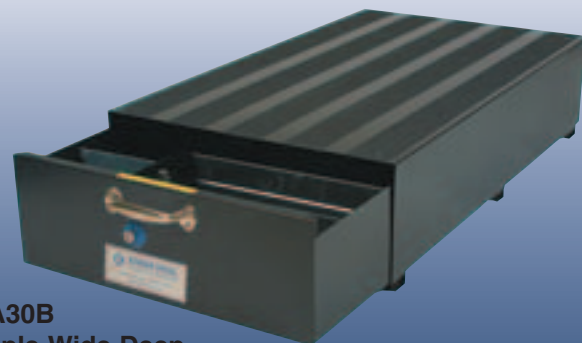


3. Double Lid Crossbox & Ladder Rack
MSRP \$1273 Customer Cost \$318



4. Single Lid Crossbox & Ladder Rack
MSRP \$1273 Customer Cost \$318

Upgrade Your Package



SA30B
Triple Wide Deep
All-Weather Stow-All



LOADFLEX
Ladder Racks for
Full Size &
Mid Size Trucks

Full Size Pickup Packages



5. Jumbo 18" Deep Double Lid Crossbox
MSRP \$586 No Customer Cost



6. Jumbo 18" Deep Single Lid Crossbox
MSRP \$586 No Customer Cost

Note: Package 5 and 6 1500 Crew Cab (short bed) are only available with 13" deep toolbox.

Mid Size Pickup Packages



1. Double Lid Crossbox
MSRP \$623 No Customer Cost



2. Single Lid Crossbox
MSRP \$623 No Customer Cost



LOADRUNNER Ladder Racks
for Full Size and Mid Size trucks.



RS-3
Ratchet
Strap

Accessories available from your local Adrian Steel distributor.

www.adriansteel.com

2007 GM Business Choice Program Requirements

This program is offered only to businesses that use commercial vehicles for day-to-day business operations. You must provide proof of your commercial business. You must take delivery of your vehicle, including the upfit, during the program period. This program may not be compatible with other offers or incentive programs. Consult with your Chevrolet or GMC dealer for program compatibility and other restrictions. The 2007 GM Business Choice program is valid from October 1, 2006 to September 30, 2007.

www.gmbusinesschoice.com

www.gmfleet.com
www.chevrolet.com
www.gmc.com



ADRIAN STEEL®

Expect More. Get More!



Now your Adrian Steel van and pickup equipment is warranted to be free from defects in material and workmanship, under normal use and service, for a period of three years or 36,000 miles, whichever occurs first from the date of delivery to the original retail purchaser when installed by an authorized Adrian Steel distributor. One more reason why Adrian Steel should be your choice for commercial van and pickup equipment.

Distributed by:

WWW.ADRIANSTEEL.COM